

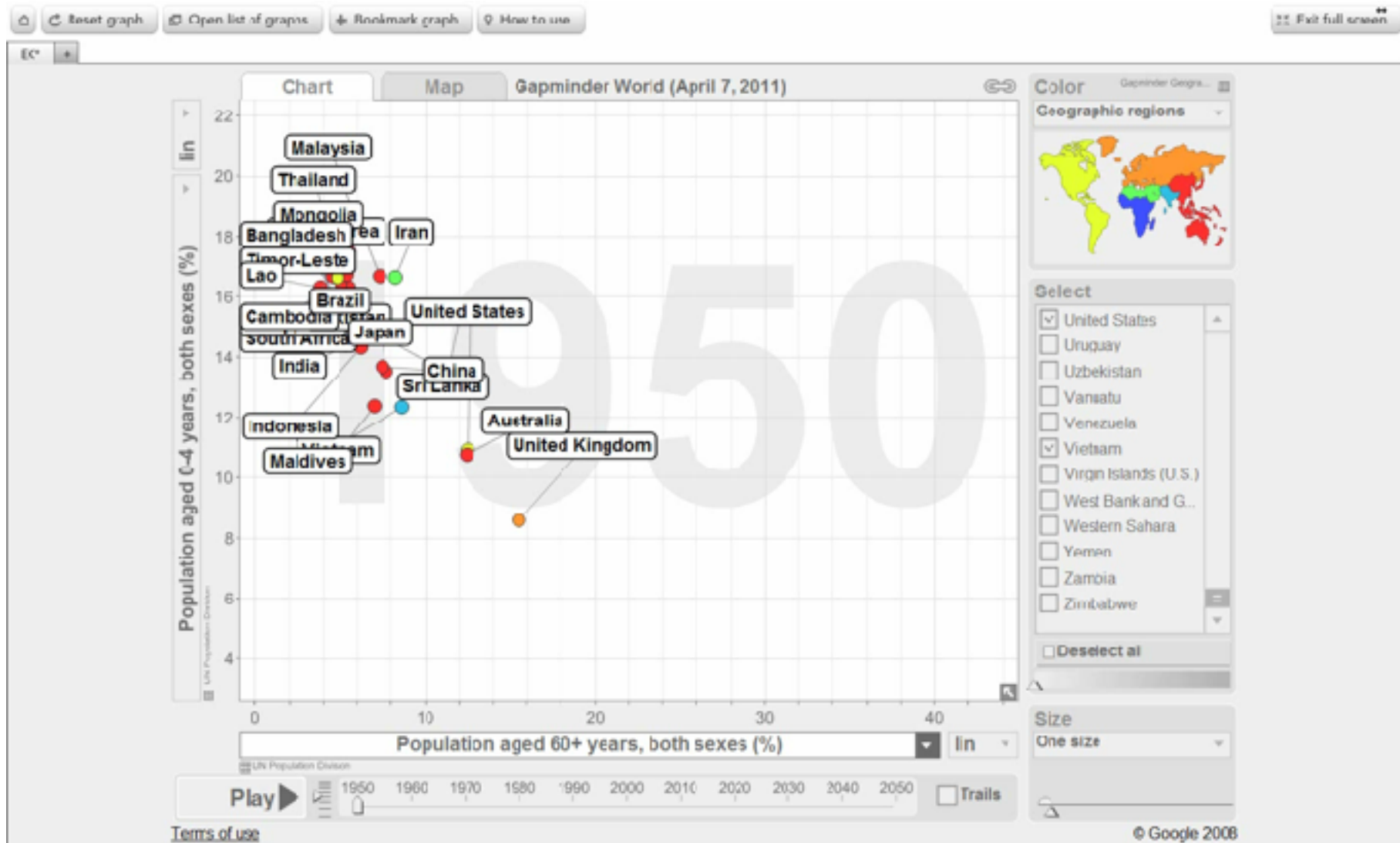


Policy implications of population ageing

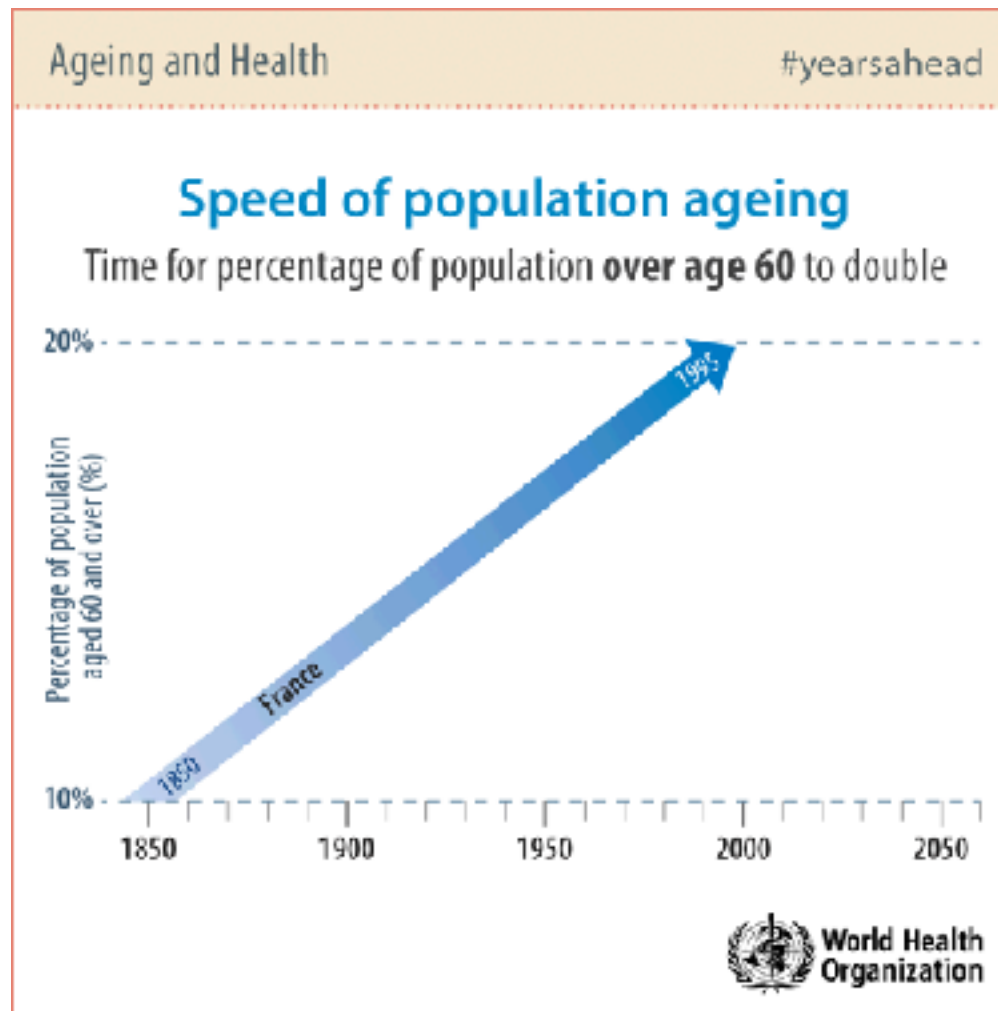
Eduardo KLIEN, HelpAge International

*Workshop on Effective Use of Data for Policy Making on Ageing
5-6 December 2017, Chiang Mai, Thailand*

Population ageing



Rapidness of ageing



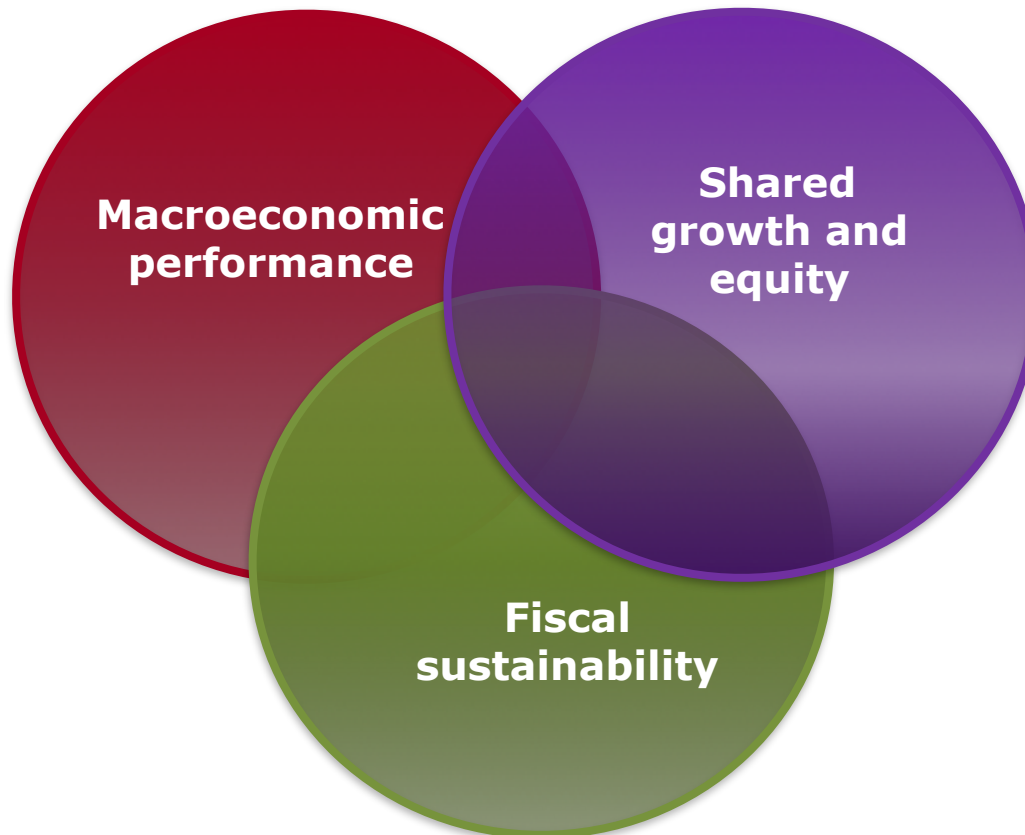
Key challenges for policy makers

a) Economic growth

b) Harmonious and equitable societies

Population Ageing

parameters for the economic implications of ageing



How can policies impact economic growth?

- a) Size of workforce
- b) Quality of workforce

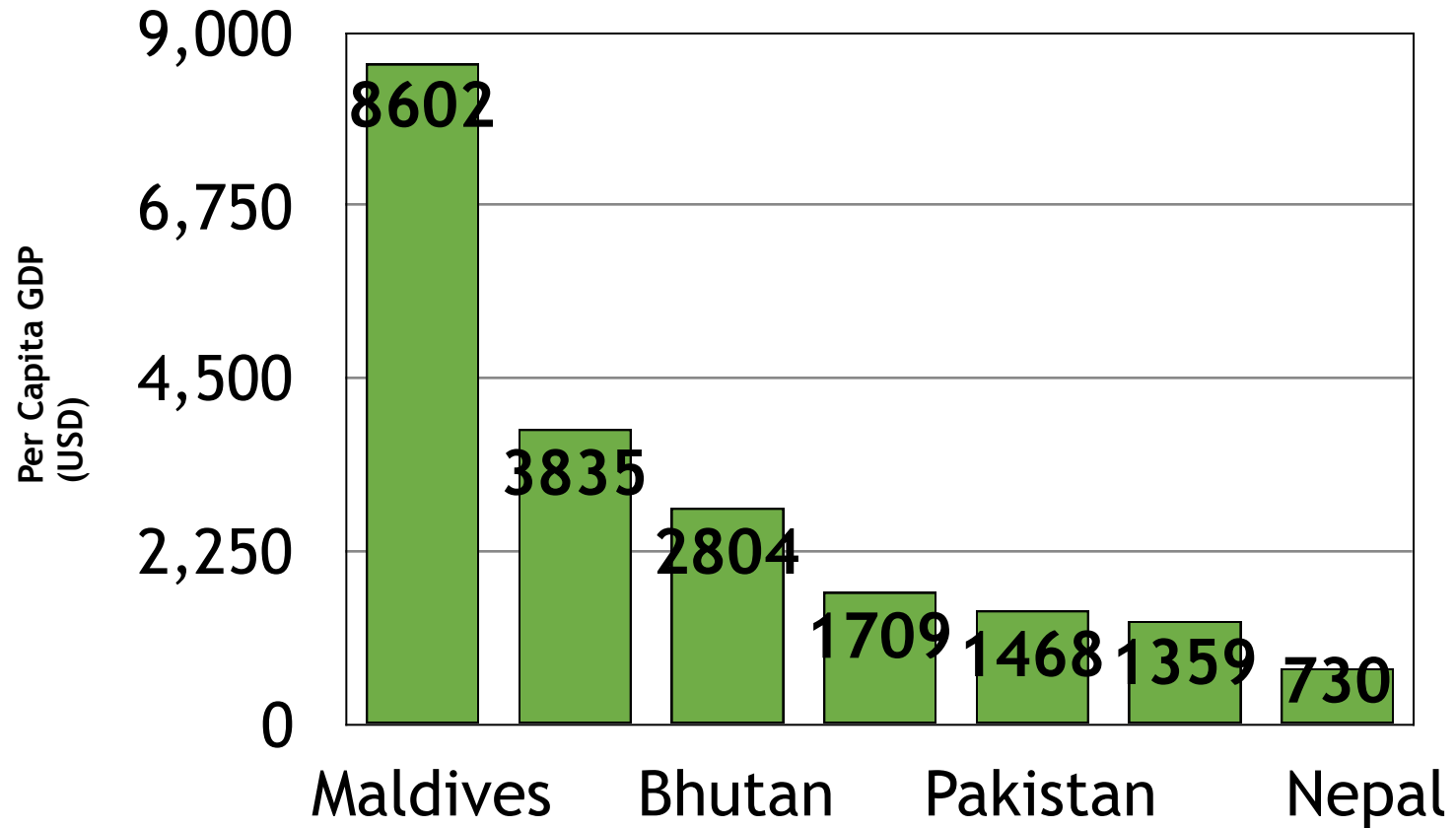
Size of workforce

- Longer working life
- Broader participation of women
- Complementary approaches to immigration

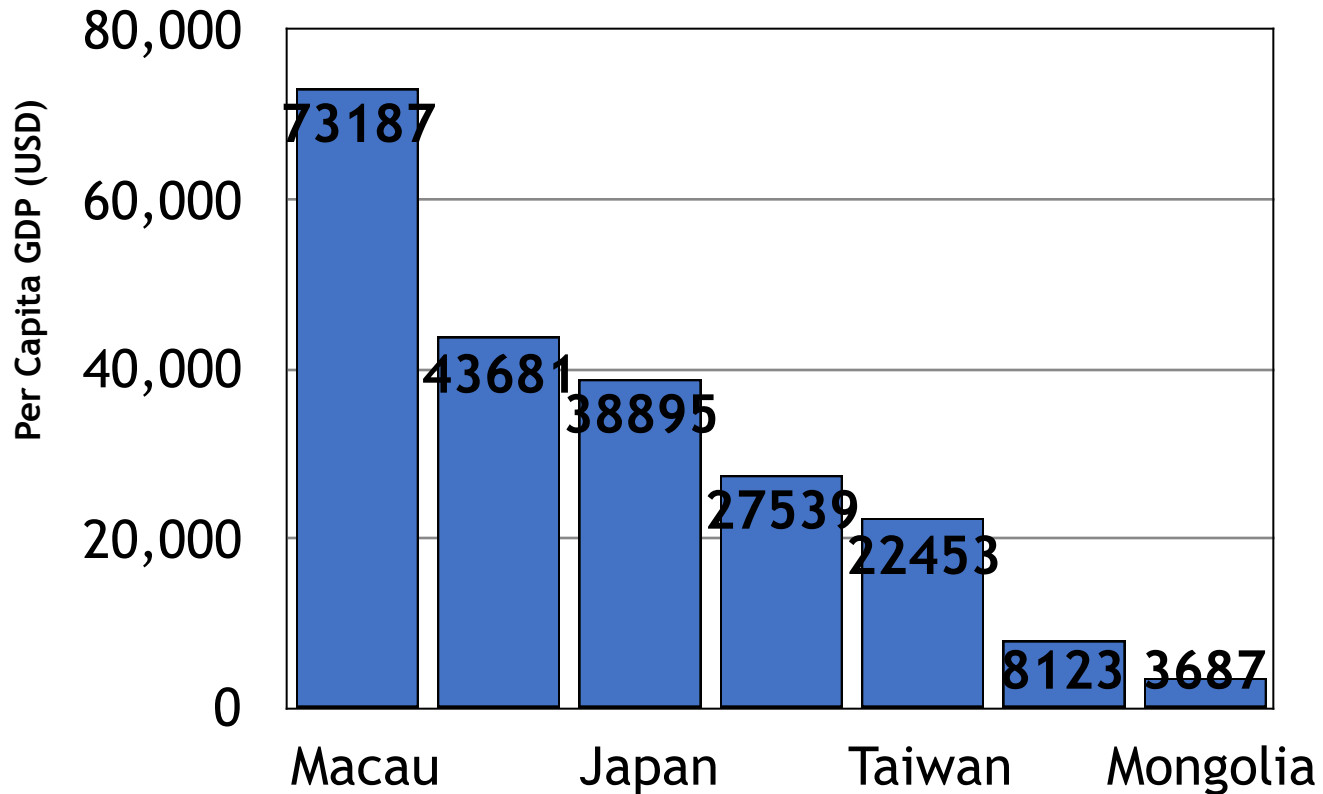
Quality of workforce

- Short-run adaptation
- Education systems
- Capital and technology
- Social protection
- Social organisation

GDP South Asia (Per Capita 2016)



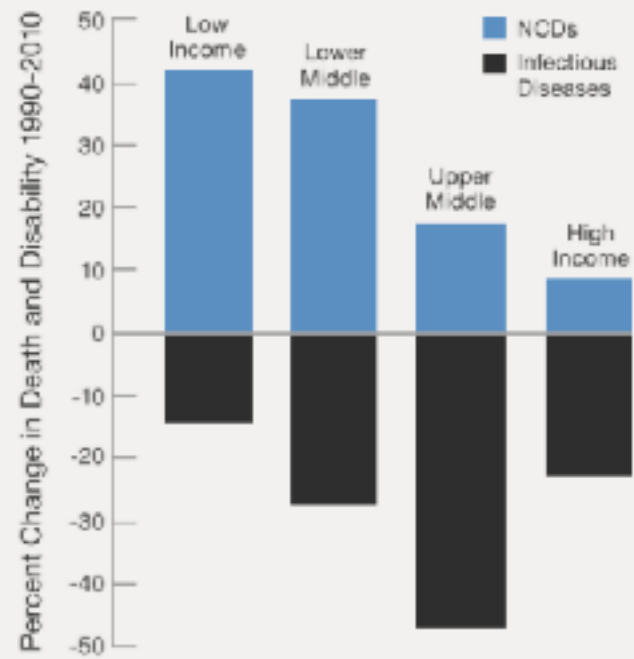
GDP East Asia (Per capita 2016)



Policies on Health and care

- A healthy population is a productive population
- Functionality
 - a) Quality
 - b) Length
- Most health systems in Asia are not adapted to epidemiological transition

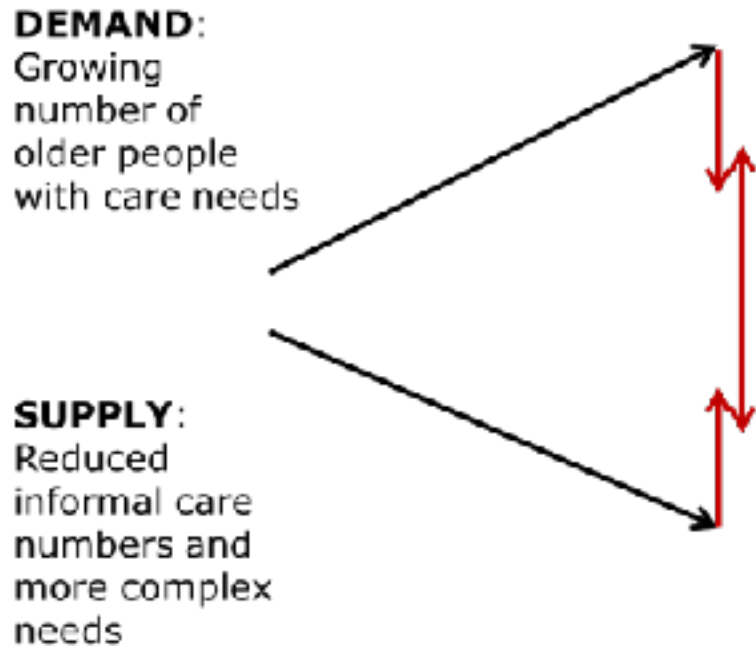
Rise of NCDs exceeds decline of infectious diseases in developing countries



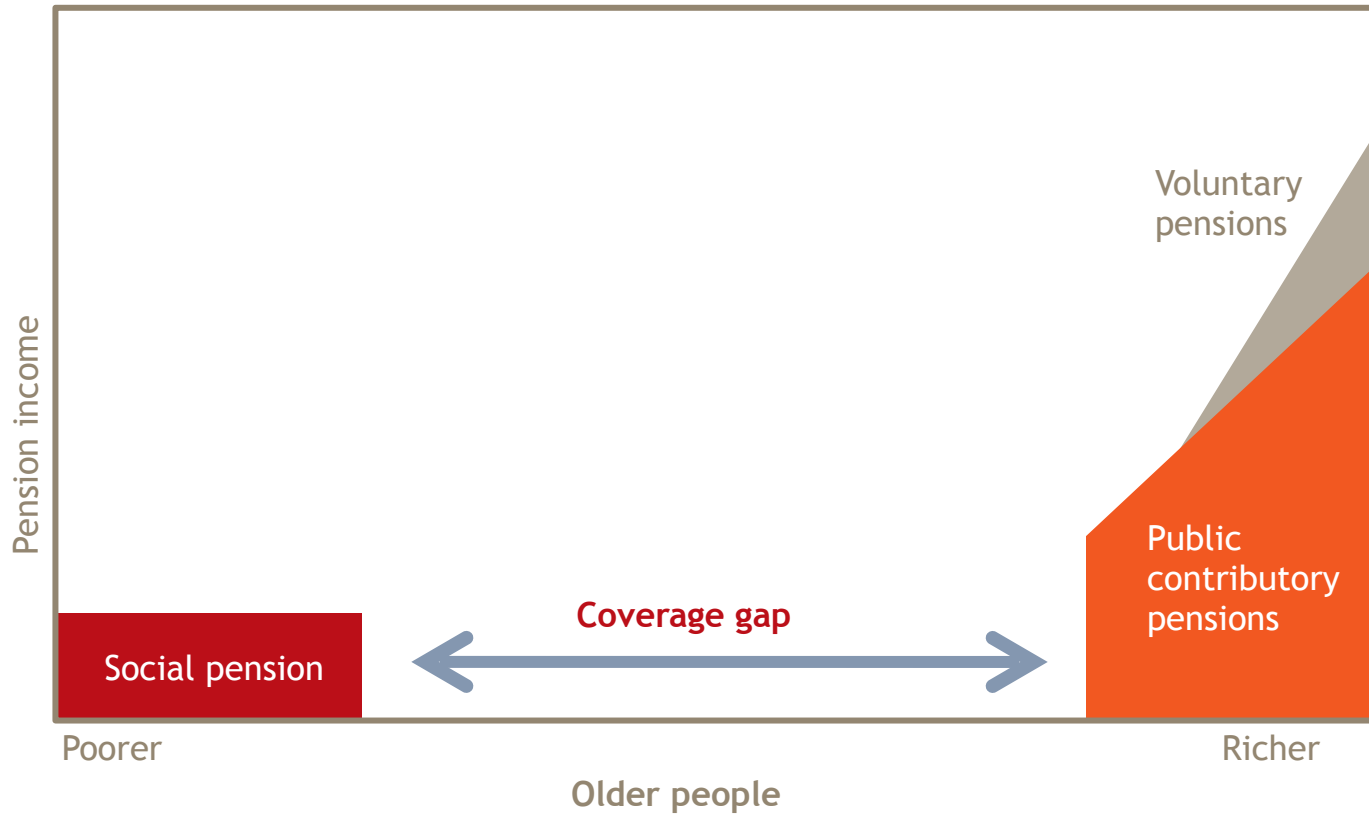
Source: [Institute for Health Metrics and Evaluation, Global Burden of Disease Study \(2010\)](#)

[Share](#)

Policies on Long Term Care



Social Protection in old age



Social Organisation

- Conception of old age
- Older people as a resource

In short:

- Adapting to changing demographic structures starts **now**
- Adaptation is not the addition of isolated policies
- Adaptation demands strategy
- Strategy requires evidence and knowledge
- Adaptation requires political will

Political will:

- Opportunity
- Knowledge
- Pressure
- Leadership
- Consensus